



NetSupport Notify

Mac Agent 2.02 Read Me

Contents

System Requirements..... 3
Installation..... 4
Configuration 5
The Log File 5
Contacting NetSupport 6

System Requirements

The NetSupport Notify Agent for Mac OS X requires an Intel-based Mac, running Mac OS X 10.5.8 or later.

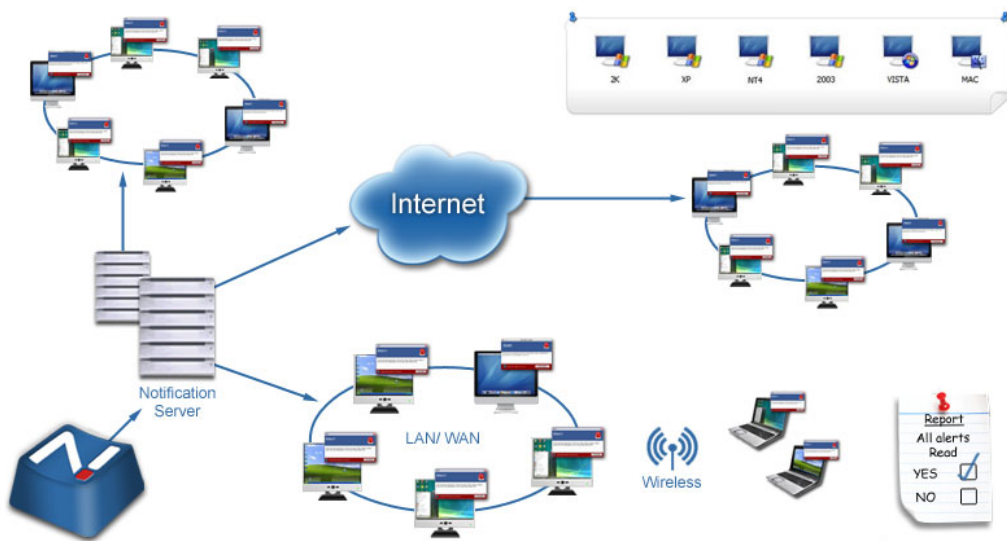
You will require an administrator password to complete this installation.

Installation

To install the Mac Notification Agent, you need to mount the **NSNotifyAgent.dmg**. Double-click the **NSNotifyAgent.pkg** installer package file and follow the on-screen instructions.

You will need to configure the information that the Notification Agent uses to connect to the Notification Server (refer to the next section for further information.)

If you place a pre-configured config.dat file next to the installer package file before you double-click, the installer will copy that config.dat file into position for you. This can be used to simplify installation and configuration, especially on more than one machine. You will need to drag the installer package file from the disk image window to another folder, (for example the desktop) in order to place the config.dat file next to it.



Configuration

The file `/Library/NSNotifyAgent/daemon/config.dat` contains the Notification Server details used by the Notification Agent.

This file can be edited using the Configurator application. The Configurator can be found at: `/Applications/NetSupport/NetSupport Notify/ Configurator.app`

If you modify or replace this file by hand you will need to restart the computer. If you edit this file using the Configurator then you will still need to restart the computer.

The Log File

Diagnostic information and records of acknowledged messages are stored in the log file. This can be found at:

`/var/log/notifydaemon.log`

To open this file either use the Console application (`/Applications/Utilities/Console.app`) or the "open" command in the Terminal command line.

Contacting NetSupport

If you have any comments regarding the design, installation, configuration, or operation of this package please contact us.

UK & International

www.netsupportsoftware.com

Technical Support: support@netsupportsoftware.com

Sales (UK & Eire): sales@netsupportsoftware.co.uk

Sales (International): sales@netsupportsoftware.com

North America

www.netsupport-inc.com

Technical Support: support@netsupportsoftware.com

Sales: sales@netsupport-inc.com

Canada

www.netsupport-canada.com

Technical Support: support@netsupportsoftware.com

Sales: sales@netsupport-canada.com

Germany, Austria and Switzerland

www.pci-software.de

Technical Support: support@netsupportsoftware.com

Sales: sales@pci-software.de

Japan

www.netsupportjapan.com

Technical Support: support@netsupportsoftware.com

Sales: sales@netsupportjapan.com